



USACE New Orleans District
Operations Division

SURVEYOR'S REPORT
Hydrographic Examination Survey
USCG Station Dulac
Dulac, Terrebonne Parish, Louisiana

Report of Survey: Andrew Oakman, U.S. Army Corps of Engineers, New Orleans District

Project: USCG Station New Orleans, Examination Survey, FY25

Location: 241 Coast Guard Rd, Dulac 70353, Terrebonne Parish, Louisiana.

Date: Field data was acquired on 29 September 2025. Additional occupation of Benchmark GC-3 acquired on 03 October 2025.

Right of Access: Proper identification must be shown for access into the USCG Base. Access to the USCG Station Dulac is through a security gate at the end of Coast Guard Road. POC for the Station Dulac is: Officer of the Day, 409-988-1257. The boat ramp used for launching and loading the survey boat is on the east side of the property.

Personnel: System Operator/Boat Captain: Andrew Oakman

Datum: The horizontal coordinates are referenced to the State Plane Coordinate System, Louisiana South, North American Datum of 1983 (NAD 83). Soundings are referenced to Mean Lower Low Water (MLLW) from the latest tidal epoch (1983-2001).

Instruments: The following instruments were used for data collection:

ECHOBOAT 160	
Data Collection Software	HYPACK 2025
Multibeam Sounder	NORBIT SeaRay
Positioning	Applanix POS MV

Field Procedures: This survey was performed utilizing Real-Time Kinematic Network (RTN) GPS. All tidal reductions were obtained utilizing RTK and referenced to MLLW using *single point datum relationship between NAVD and MLLW using VDatum's Online Conversion Tool. Sound velocity determined from direct sound velocity measurement at sonar head. * GC-3 has been disturbed since 2022, concrete broken and probable translation occurred.

Monument	PID	X Coordinate (sft)	Y Coordinate (sft)	Geoid Model	Elevation (sft)	
					NAVD88	MLLW
GC 3*	AH6332	3478412.06	319555.23	18	2.74	3.18
TBM 1 SHEARED CONDUIT		3477975.81	319693.53	18	4.38	4.82
TBM 2 N. BIT BOLT		3477993.71	319658.73	18	4.83	5.27
USCG BM		3477913.76	319629.49	18	3.17	3.61
STAFF GAGE 4FT MARK		3478035.44	319698.68	18	3.61	4.05

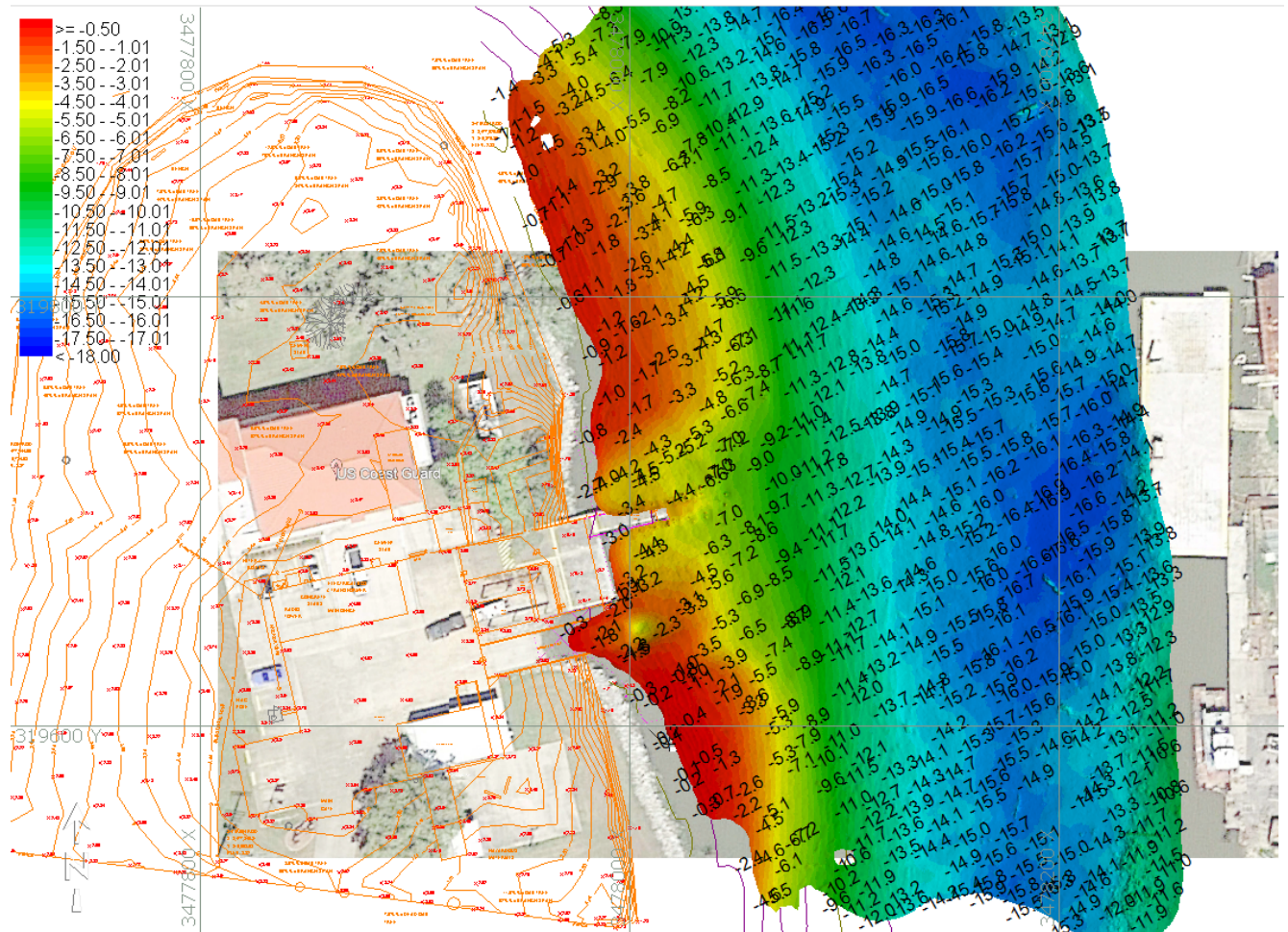
Data Collection: A multibeam system was utilized for entire project. All mapping done in 200 kHz frequency.



USACE New Orleans District Operations Division

Data Processing: The survey data was processed upon completion of the survey. Sounding spikes were removed and cross line statistics were performed for each day of survey with no anomalies found.

Field Conditions: Mostly calm. Heavy marine traffic throwing wake.



OVERVIEW MAP NOTES:

1. REFER TO XYZ WITH SURVEY NAME: HN_00_CGD_20250929_CS_05X05_MLLW_A.XYZ
2. DEPTHS DEPICTED BY THIS SURVEY ARE REFERENCED TO MEAN LOWER LOW WATER (MLLW), TIDAL EPOCH 1983-2001, AS REPORTED BY THE NATIONAL OCEANIC AND ATMOSPHERIC ADMINISTRATION (NOAA). NOAA'S VDATUM MODEL ONLINE CONVERSION TOOL WAS USED WITH A SINGLE POINT NAVD TO MLLW AT LAT 29.202801 LON -90.665423 FOR THE ENTIRE PROJECT.

0.0' NAVD88 (2009.55) = 0.44' MLLW
3. TIDAL REDUCTIONS WERE OBTAINED UTILIZING LSU C4GNET REAL-TIME KINEMATIC GPS AND REFERENCED TO NAVD88 (2009.55) WATER SURFACE ELEVATIONS, NOT CALIBRATED TO MONUMENT GC 3. ELEVATIONS WERE CORRECTED TO MLLW USING THE RELATIONSHIP IN NOTE 2.
4. ALL ELEVATIONS ARE BELOW THE CHART DATUM UNLESS PRECEDED BY A (+) SIGN.



USACE New Orleans District
Operations Division

5. PLANE COORDINATES ARE BASED ON THE LAMBERT CONFORMAL CONIC PROJECTION FOR THE SOUTH ZONE OF LOUISIANA AND REFERENCED TO THE NORTH AMERICAN DATUM OF 1983 (NAD 83).

6. VERTICAL MEASUREMENTS WERE MADE USING A NORBIT SEARAY MULTIBEAM SYSTEM.

SURVEY VESSEL
ECHOBOAT 160

DATE OF SURVEY
29 SEP/03 OCT 2025

AREA
USCG STA DULAC

8. THE INFORMATION DEPICTED ON THIS MAP REPRESENTS THE RESULTS OF SURVEYS MADE ON THE DATES INDICATED ABOVE AND CAN ONLY BE CONSIDERED AS INDICATING THE GENERAL CONDITIONS AT THAT TIME. THIS CHART IS SOLELY FOR THE DISTRIBUTION OF AVAILABLE DEPTHS AT THE TIME OF SURVEY.

9. SURVEY ACCURACY STANDARDS, QUALITY CONTROL, AND QUALITY ASSURANCE REQUIREMENTS WERE FOLLOWED DURING THIS SURVEY IN ACCORDANCE WITH USACE EM 1110-2-1003, HYDROGRAPHIC SURVEYING, 30 NOV 13.

10. VOLUME OF MATERIAL TO BE REMOVED EQUALS 1,530 CUBIC YARDS GIVEN THE PROVIDED TOE LINES AT -11' MLLW.



Appendix A

GC 3

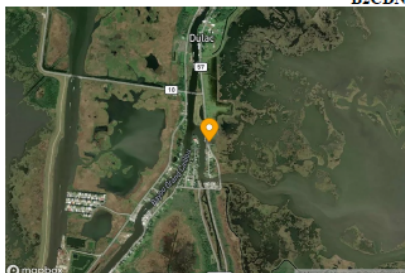
GC 3

Benchmark Datasheet

Name GC 3
PID AH6332
Stamping GC-3 1993
Setting Type 7 - Set In Top Of Concrete Monument
Marker Type DD - Survey Disk
Stability C - May Hold, But Of Type Commonly Subject To Moving
Rod Length
Projection
Length
Magnetic No
Parish Terrebonne
State Louisiana

CEMVD / CEMVN

Last Updated 09/23/2025 18:20 by
B2CDNAJC



Description

DESCRIBED BY GULF SOUTH ENGINEERS INCORPORATED 1993 (TWR) MONUMENT IS LOCATED SOUTH OF THE CITY OF HOUMA JUST OUTSIDE OF THE RIGHT-OF-WAY OF LA. HIGHWAY 57, (TOWNSHIP 19 SOUTH RANGE 17 EAST SECTION 87). MONUMENT IS A TERREBONNE PARISH LIS DISK SET IN CONCRETE AND IS FLUSH WITH THE GROUND. MONUMENT IS ABOUT 0.38 MI (0.61 KM) SOUTH OF THE INTERSECTION OF FALGOUT CANAL ROAD AND LA. HIGHWAY 57, 40.95 FT (12.48 M) EAST OF THE CENTERLINE OF LA. HIGHWAY 57, 102.47 FT (31.23 M) SOUTHEAST OF A UTILITY POLE WITH A NAIL/SHINER AND TWO TELEPHONE PEDESTALS (SW 36 AND SW 36-1), 96.15 FT (29.31 M) SOUTH OF AN ABANDONED TIN BUILDING, 5.2 FT (1.6 M) WEST OF A CONCRETE SLAB, 18.2 FT (5.5 M) NORTH OF A SHELL DRIVEWAY.

Horizontal Attributes

Datum	Epoch	Northing	Easting	Latitude	Longitude	Accuracy	Derivation	Published Date	Superseded Date
NAD83	NA2011	319,554.96 ft	3,478,412.3 ft	29°22'38.01752	-90°42'46.81556	05 ft	ADJUSTED	03/26/2019	

Vertical Attributes

Datum	Epoch	Geoid	Elevation	Accuracy	Derivation	Published Date	Superseded Date
NAVD88	2009 55-16	GEOD18	2.62 ft	10 ft	GPS OBS	10/12/2022	
NAVD88	2009 55	GEOD12A	2.85 ft	10 ft	GPS OBS	02/21/2013	
NAVD88	OPUS	GEOD12B	2.73 ft	10 ft	GPS OBS	04/24/2019	

Latest Benchmark Recovery Note

Condition	Recovered On	Job Number	Org Recovered By	Day Defined?	Month Defined?	Satellite Suitable?	Description	Last Updated By
GOOD	06/03/2006 00:00		National Geodetic Survey	Y	Y			05/26/2022 08:28

CEMVD / CEMVN
GC 3

Last Updated 09/23/2025 18:20

IBBISS
Page 1 of 5





TBM 1 : SHEARED CONDUIT



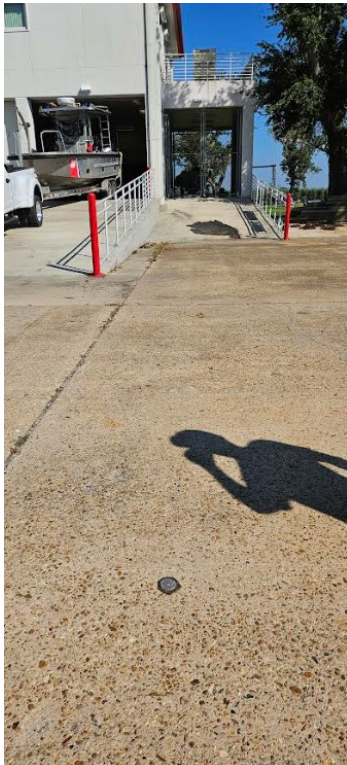


USACE New Orleans District
Operations Division

TBM 2 : N. BIT BOLT



USCG BM





STAFF GAGE ON WHARF

